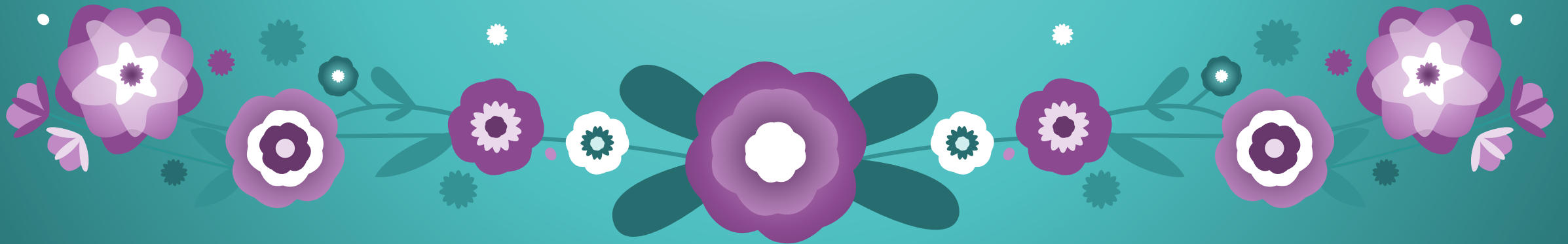
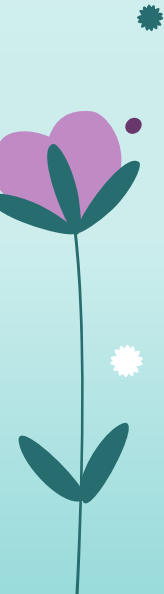
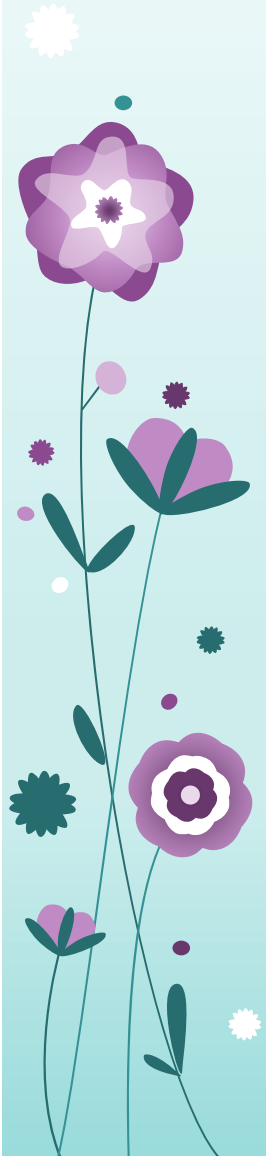


# Ruhi Study Circles



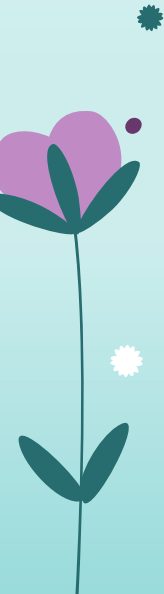
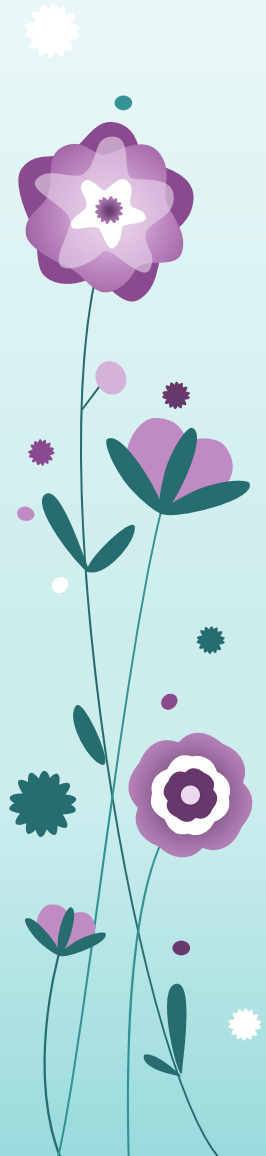
# What is a Study Circle and what does it do?

- A study circle is a small group of friends or collaborators dedicated to advancing their own spiritual and intellectual growth, and the transformation of society through service.
- Study circles meet regularly in a variety of settings, from homes to public spaces, to study the course materials.
- Anyone aged fifteen or older, from any spiritual background, is welcome to take part and draw insights from the Bahá'í Faith that can be applied to their lives and communities.



# Who participates?

- Collaborators - all participants. They are engaged in a reciprocal process, one in which everyone learns. The responsibility of learning rests with each participant.
  - Tutor - a more experienced person; facilitates this process and also gains new insights into the material
  - Student - the person who undertakes the active work of learning.



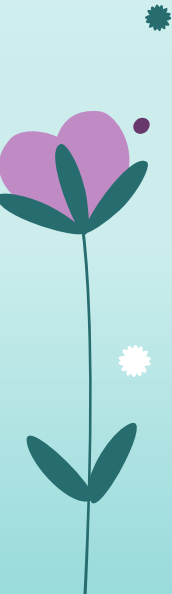
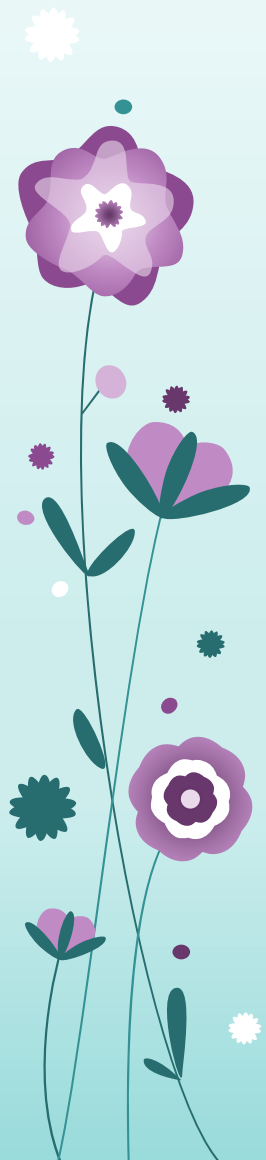
# What do members and institutions do?

- **Members of the Study Circle**

- After studying one course, many of the members of a study circle will stay together to go on to the next course...
- Although members of study circles will often engage in social and service activities together, no feelings of exclusivity should be allowed to develop among them. Furthermore, the study circles should be guided by the spirit of consultation in planning recreation, teaching, and service activities.

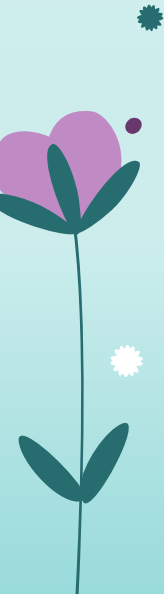
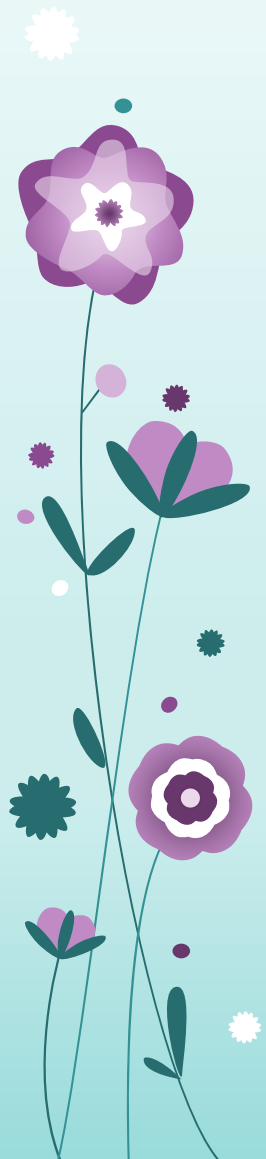
- **Institutions**

- The institutions should also nurture and support the members of study circles and other individuals in the community in acts of service that come about through personal initiative.
  - International Teaching Centre, 2000 Feb, Training Institutes and Systematic Growth



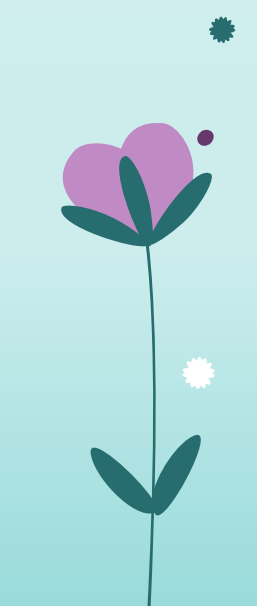
# What are other features of study circles?

- A distinguishing feature of study circles is that in many countries, and across diverse cultures, they have created a new dynamic within the community and have become nuclei of community life and catalysts for teaching, service, and community development.
- In addition to study of the institute courses, the members of the study circle, both Bahá'ís and their friends often participate in service and extracurricular activities that bind the group together in fellowship and attract others to this mode of learning.
- Having experienced the participatory learning style of the courses, the members of the study circle gradually take on a stronger commitment to actively serve and apply the knowledge and skills they are gaining to the work of the Faith. Some members of study circles are eventually trained as tutors and then initiate their own study circles.
  - International Teaching Centre, 2000 February, Training Institutes and Systematic Growth, p. 7



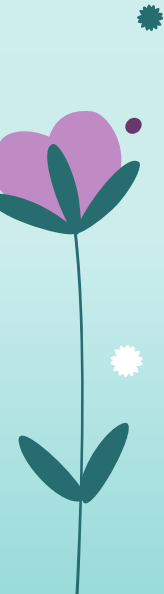
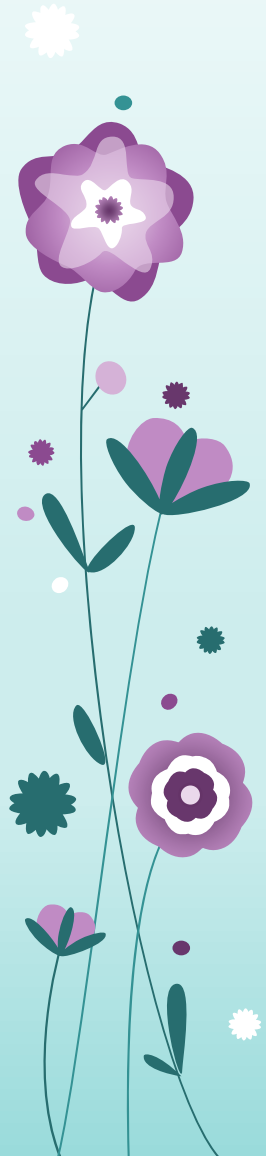


# Courses

- Courses are designed along a series of “paths of service”
    - The content and order are based on a series of acts of service, the practice of which creates capacity in the individual to meet the exigencies of dynamic, developing communities
    - At the beginning of each path of service collaborators mostly learn and develop new concepts and skills
    - Later on, they participate in courses that prepare them to act as tutors of the earlier courses, creating a unique and dynamic environment for the development of human resources
- 

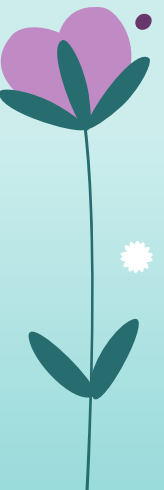
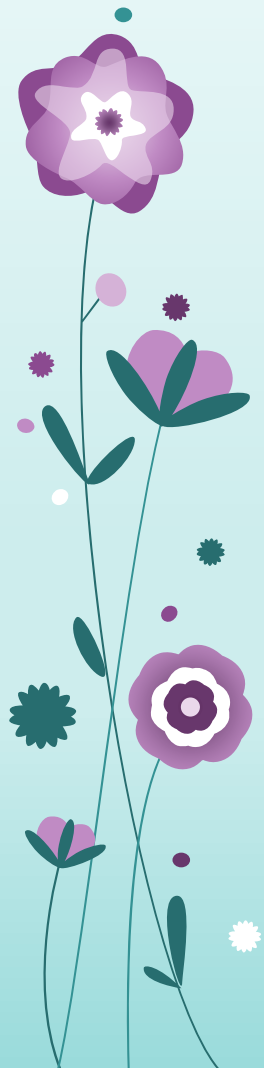
# Ruhi Courses

- Book 1: Reflections on the Life of the Spirit
- Book 2: Arising to Serve
- Book 3: Teaching Children's Classes (Grades 1-5)
- Book 4: The Twin Manifestations
- Book 5: Releasing the Powers of Junior Youth
  - Initial Impulse
  - Widening Circle
- Book 6: Teaching the Cause
- Book 7: Walking Together on a Path of Service



# Additional Courses - In development or pre-publication

- Book 8: The Covenant of Bahá'u'lláh
- Book 9: Gaining an Historical Perspective
- Book 10: Building Vibrant Communities
- Book 11: Material Means
- Book 12: Family and the Community
- Book 13: Engaging in Social Action
- Book 14: Participating in Public Discourse





# Resources

- [International Baha'i Community](#) – official website
- [Ruhi Institute website](#)
- Ruhi Books 1 and 2 - Introduction
- [Training Institutes and Systematic Growth](#), 2000
- [Training Institutes: Attaining a Higher Level of Functioning](#), 2017
- [U.S. Baha'i website](#)